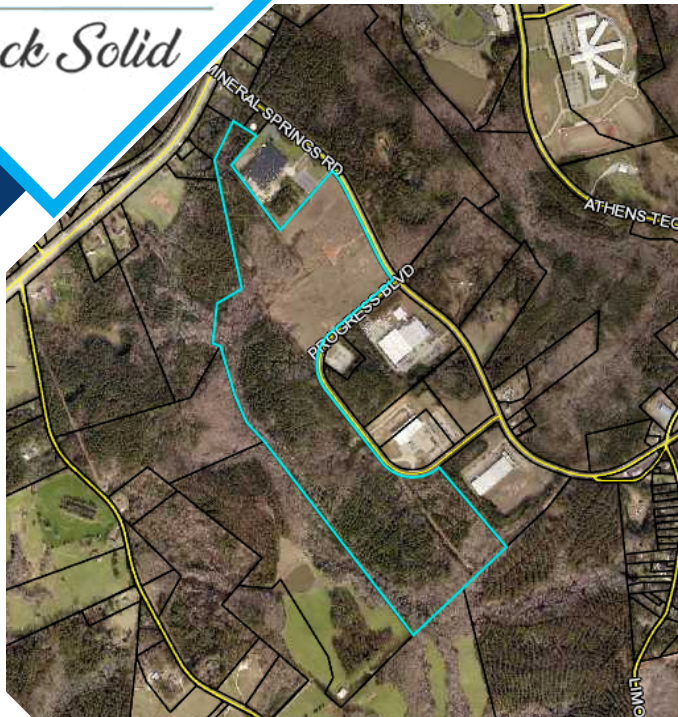




Elberton Industrial Park

1395 Mineral Springs Road
Elberton, Georgia 30635



Details

Total Acreage:
190

Available Acreage:
138.9

Largest Tract:
72.6

Zoning:
Industrial

GRAD Certified:
Yes

Rail-Served:
No

Ownership:
City of Elberton

Transportation

Interstate 85: 30 miles

Airports

Elbert County, Patz Field:
3 miles, 4,000-foot runway

Greenville-Spartanburg:
75 miles, 11,000-foot runway

Utilities

Water

Size: 8-inch main
Provider: City of Elberton

Sewer

Size: 12-inch main
Provider: City of Elberton

Gas

Size: 6-inch main
Provider: City of Elberton

Fire Protection

ISO Rating:
Provider: City of Elberton

Telecommunications

Providers: AT&T, City of Elberton (fiber)